



# From the Heart



Newsletter No. 8

17<sup>th</sup> March 2022

## COMING UP AT OLSH...

### MARCH 2022

Wed 23	PSG Meetings
Fri 25	School Dental Programme
Fri 25	Sandhurst Switches Off
Fri 25	Ride to School Day
Tue 29	Join the Ride Parent Session – 7.30pm

### APRIL 2022

Wed 6	Cluster Cross Country
Wed 6	Resilience Project Parent Night
<b>Fri 8</b>	<b>Last Day Term 1</b>
Fri 15	Good Friday
Sun 17	Easter Sunday
Mon 18	Easter Monday
Mon 25	ANZAC Day Public Holiday
<b>Tue 26</b>	<b>First Day Term 2</b>

### MAY 2022

Mon 2 – Fri 6 Catholic Education Week

GOD WATCHED OVER ME  
BEFORE I KNEW HIM,  
AND BEFORE I LEARNED SENSE  
OR EVEN DISTINGUISHED  
BETWEEN GOOD AND EVIL,  
AND HE PROTECTED ME,  
AND CONSOLED ME  
AS A FATHER WOULD HIS SON.

St. Patrick

young-catholics.com

## From the Principal ...

Dear Families,

It has been wonderful to be back in the school this week after my forced absence last week. It is important to note that COVID is still very much present in our community, and whilst it certainly isn't running rampant, there is enough of it to suggest that we need to stay diligent with our testing. Thank you so much to everyone for keeping on top of this and being so open with your communication around what is happening in this space with your families. More Rapid Tests were sent home on Wednesday so hopefully your testing supply is nice and healthy and allows you to test each child twice weekly, preferably on Sunday and Wednesday evenings.

Next week is fairly quiet up until Friday when we have three things happening in our school. They are:

- **Sandhurst Switches Off Day** - on this particular day we are asked to try and reduce the amount of electricity we consume as a school and know that our collective effort makes a difference to our environmental impact. Please feel free to join our efforts!

- **Ride to School Day** - where possible and practical, students are encouraged to ride to school next Friday as part of our 'Join the Ride' program we are doing in conjunction with Elmore Primary School. More details on this will come out next week.

- **School Dental Program** - we have had a terrific response to our free dental screening which will also place next Friday.

For those families who are considering what their Secondary School options are for senior students there is a flyer attached to this newsletter in regard to Catherine McAuley College, Bendigo and upcoming opportunities to see what the school has to offer. Please take some time to check this out.

Finally, from me, we are looking for someone from our school community to join our Advisory Council, formerly known as the School Board. The Advisory Council, supports the principal in the oversight of school's resources and general governance. We meet twice a term of a Wednesday evening. Please let me know if you would like to know more about this.

Have a great weekend and week ahead,

Craig Simpson  
Principal

*Our Lady of the Sacred Heart School promotes the safety, wellbeing and inclusion of all children.*

W: [olshelmore.catholic.edu.au](http://olshelmore.catholic.edu.au)

PH: 54326254

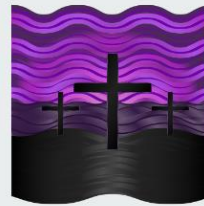
E: [principal@olshelmore.catholic.edu.au](mailto:principal@olshelmore.catholic.edu.au)

# School News



## 40 Cans for 40 days!

Please donate a can for **LENT**! We are asking each family to donate a can such as soup, spaghetti, baked beans etc. Each can can be placed in a box provided in the school foyer and given to Elmore Foodshare at the conclusion on Lent.



- Denise Nihill (Catholic Identity Leader)

### PSG MEETINGS

A reminder that all PSG meetings will be held NEXT Wednesday 23rd March. You should now have received a note confirming your time. Please note that all PSGs will be attended by your child's classroom teacher, learning support officer, and myself. Meetings will be held in the teacher's planning room. - Janette Colbert (Leader of Learning Diversity)

## LEARNERS OF THE WEEK

Congratulations to Axel, Chris, Frankie, Roy & Bessy for being named our Learners of the Week!



### CAMPASPE PRIMARY TENNIS DIVISION FINALS.

On Wednesday 8th March, Axel, Tarli, and Reno went to the Campaspe Primary Tennis Division Finals in Echuca. They played 3 games of tennis in small groups. They played against other Grade 5/6 students from schools around the district. Axel won a couple of games. Tarli won 3 sets and will move on to the regional finals in Swan Hill, and Reno won 3 sets and played off in the semi-finals.

They all had a great day and represented OLSH with pride. A huge congratulations to Axel, Tarli and Reno!



## AFTER SCHOOL CARE PROGRAM – NOW AVAILABLE!



OSHClub is our new provider of After School Care at Elmore Primary School! The program at Elmore Primary School is also open for the children of Our Lady of Sacred Heart Primary School.

Parents who are interested in using afterschool care with OSHClub at the Elmore Primary School can now enrol online at <https://www.oshclub.com.au/vic/elmore-primary-school/>

Once you have enrolled, please let us know and advise us if you intend to use the shuttle bus between the schools to transport your child to the OSH Club.



## SCHOOL UNIFORMS

As we start to get some chillier mornings, a reminder that school uniforms can be ordered at any time by:

- Calling Hip Pocket on 5480 1027 or
- Visiting Hip Pocket at 173 Pakenham St, Echuca.

We are grateful to them for working with us to provide school uniforms.

# Community News



## JUNIOR NETBALLERS WANTED

We are in the need of a few more Mountain Girls to complete our 13U team.

For further details please contact  
Netball  
Operations  
Manager  
Michelle Mannes  
0457 242 597



## DISCOVER CMC IN 2023

WE'RE WITH YOU ALL THE WAY!



## OPEN HOUSE

Wednesday 23 March, 4.30-7pm  
Coolock Campus, McIvor Hwy, Junortoun

**REGISTER ONLINE NOW**

**CHECK OUT ALL THE EXCITING OPPORTUNITIES ON OFFER AT CMC IN 2023.**

**COLLEGE TOURS:** Tue & Thu: 29 & 31 March; 5 & 7 April; 3 & 5 May.  
Book online now!

**ENROLMENTS OPEN FOR YEAR 7, 2023:** 23 March 2022. Apply online!

**'DISCOVER CMC' DAYS:** 2 – 6 May. For Grade 6 students at Coolock Campus.

**ENROLMENTS CLOSE FOR YEAR 7, 2023:** 10 May 2022.

**ENROLMENT ENQUIRIES** Audra Petri College Registrar  
☎ 5445 9100 ✉ [enrolment@cmc.vic.edu.au](mailto:enrolment@cmc.vic.edu.au) 🌐 [www.cmc.vic.edu.au](http://www.cmc.vic.edu.au)  
Catherine McAuley College | A Ministry of Mercy Education Ltd | ABN 69 154 531 870



## MAKING CONNECTIONS &amp; SUPPORTING YOUR CHILDREN

Building your relationships and connections with your children is key to helping them **feel loved, safe** and **secure**. Feeling genuine connection also has many **positive impacts on our mental health**, some benefits include:

HELP DECREASE CHANCES OF ANXIETY &amp; DEPRESSION

GIVES US PURPOSE

HELPS DEVELOP GREATER EMPATHY

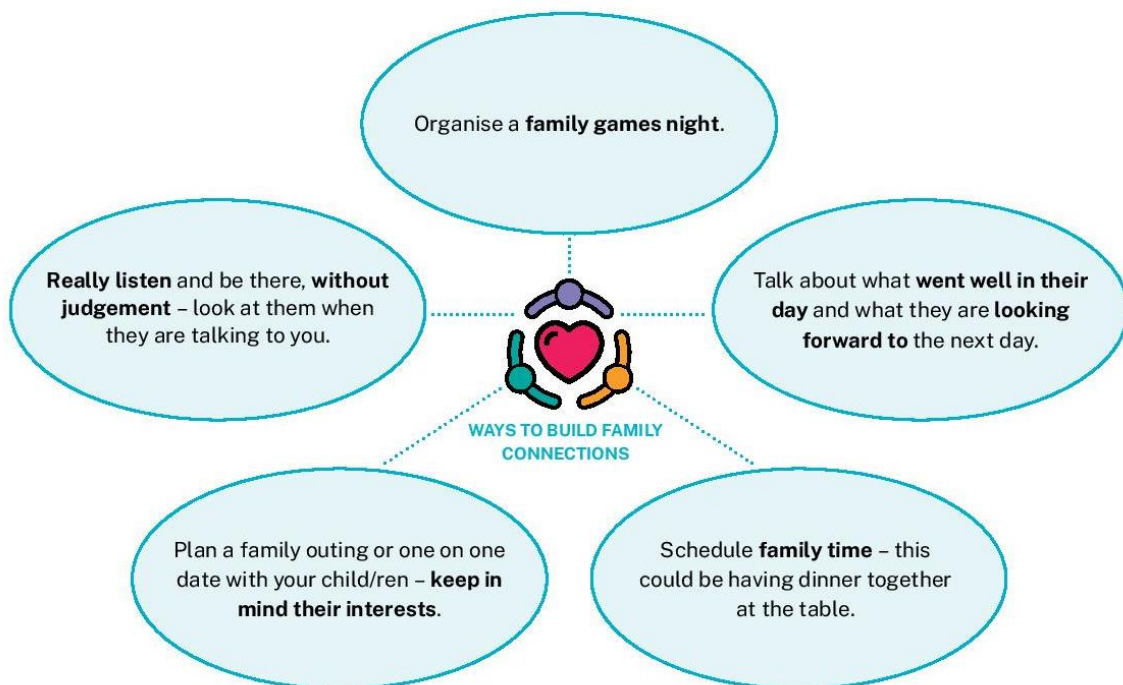
SENSE OF BELONGING

FEELING SUPPORTED

BUILDS TEAMWORK AND COOPERATION

ENHANCED HAPPINESS

INCREASES SELF ESTEEM



For more information on how to **build meaningful connections and support your children** click on the links below.



TRP's **Lael Stone** talks about Connected Parenting

[READ ARTICLE](#)


Teenagers talking about relationships with parents from **raisingchildren.net.au**

[WATCH VIDEO](#)


**raisingchildren.net.au** talks about building positive relationships for parents and children.

[READ ARTICLE](#)